

TECHNOLOGY MEETS EFFICIENCY

Mahindra Powerol Diesel Gensets

Presenting
**250kVA &
320kVA**



Actual product colour may vary

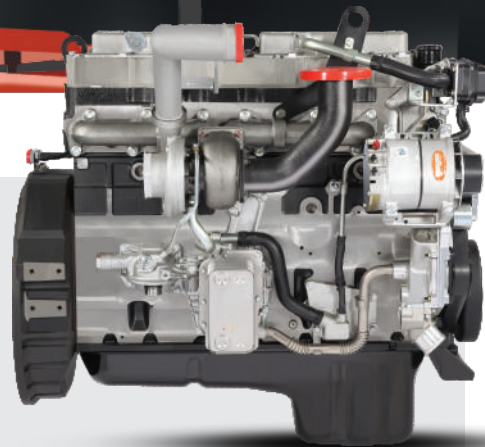
Powered by  **CUMMINS** Series Engines

250kVA & 320kVA Gensets

Features and Benefits

Advanced Engine

- CRDe technology for better fuel efficiency and emission
- Fully electronic engine, has excellent transient response capability.
- These electronic engines have better diagnostics and troubleshooting capability.
- Highest block loading capacity which makes it ideal for heavy duty applications
- Multi-stage air filter helps in smooth functioning even in dusty conditions



Genset Controller

Premium controller that delivers accurate metering, best in class protection for optimum genset performance. With Genset controller, the genset is always protected against breakdowns from electrical or mechanical flaws and thereby ensures maximum uptime.

Key features

- Compatible with Auto Mains Failure facility
- 50 Log events memory storage
- Comes with RS 485 port for modbus communication as standard scope
- Activation time delay for oil pressure, coolant temperature, voltage and frequency faults
- Routine maintenance & service alerts
- 5 configurable inputs
- Sleep mode
- Remote start & stop facility



Genset Monitoring (Key Parameters)

- Generator/load power (kW, kVA, kVA_r, pf), generator/load current, battery voltage.
- RPM, running hours, oil pressure, engine temperature and fuel level

Genset Protection (Key Parameters)

- High engine temperature, low oil pressure, engine over/under speed,
- Over current, over/under voltage, Charging alternator low voltage

Smart DG

Mahindra's Genset Monitoring System makes possible monitoring of all the critical performance parameters anytime from anywhere. It is an end to end ecosystem that connects product and customers over a cloud platform. This helps in better diagnostics of the genset for pro-active maintenance and thereby improving uptime of the genset.

Important features:

- Live information of critical genset performance parameters through Dashboard
- Real-time alerts and notifications
- Scheduled maintenance reminders over SMS and E mail
- Analytical reports for performance check

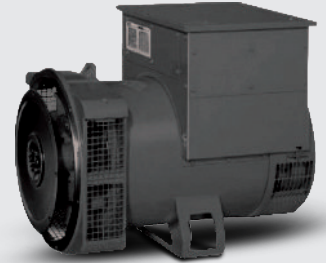
Live Information

412.0 V Generator Voltage	186.0 A Generator Current	50.0 Hz Generator Frequency
144.0 Total kVA	36,953.0 kWh	108.0 Total kW
84.0 Total kVar	27.3 V Battery Voltage	0.8 Average PF

250kVA & 320kVA Gensets

Alternator

- Brushless type, screen protected, revolving field, self-excited alternator conforming to IS/IEC 60034-1
- 3 Phase reconnect type winding with 12 terminals brought out for connection
- Superior winding for harmonic reduction
- Epoxy coating for consistent performance in all weather conditions.
- Better transient response capability



Acoustic Enclosure

- Unique trapezoidal design, makes it aesthetically appealing
- Designed to operate in extreme climatic conditions in temperatures ranging from -10°C. to 55°C. without any external aid.
- Superlative fade resistant paint can last longer in tough weather conditions.
- Draw out type fuel tank for easy maintenance
- Fire retardant acoustic and insulation material for better safety
- Lowest foot print



Fuel Tank

- Capacitive Fuel Unit (Highest accuracy level)
- Ease in Fuel Filling (Outside Canopy)

Optional Accessories

PMG alternator, Space Heater, RTD/BTD, Coolant / Oil heater, Synchronization. For more details kindly contact our authorised representative

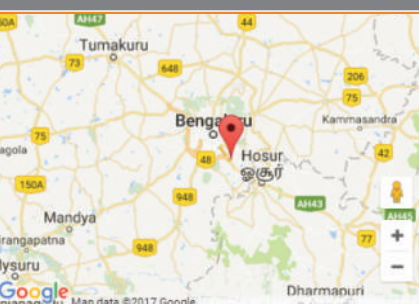
Sales & Service Network

- Wide and efficient network to serve you faster and better.
- Over 400 sales and service touch points across India

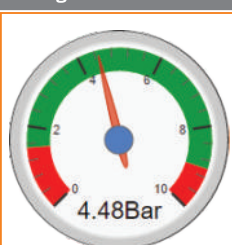
Support is just a call away

Our customer care centre is equipped with the latest software for monitoring & time bound escalation till closure of the complaints. To make it simpler for our customers, a common Toll free number is available for both sales and service support.

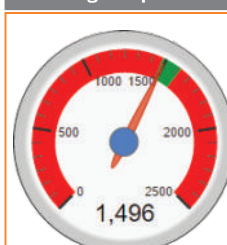
Live Location



Engine Oil Pressure

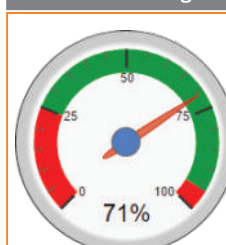


Engine Speed

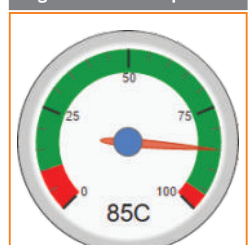


ENGINE RUN HOURS 719 Hours

Fuel Level Gauge



Engine Coolant Temperature



250kVA & 320kVA Gensets

Technical Specifications:



Genset Rating (kVA)	250	320
Genset Rating (kW)	200	256
Phase / Voltage (V)	3 / 415	
Power Factor (lagging)	0.8	
Current (A) (3 Phase)	348	445
Frequency (Hz) RPM	50 / 1500	
Governing Class	G2	
Starting System	24	
Fuel Tank Capacity (lit)	425	570
Genset Dimensions (L x W x H) (mm) approx	3990 x 1500 x 1770	4550 x 1600 x 1780
Genset Weight (Kg.)	3300	3550
Engine Specification		
Make	Mahindra mPOWER	Mahindra mPOWER
Model	mPower63105G	mPower63905G
Power Output # (HP)	310	390
Aspiration	TCA	
No. of cylinders	6	
Bore x Stroke (mm)	116.6 x 146.1	
Displacement (Lit)	9.3	9.3
Fuel consumption @ 75% load (lit/hr) ^	41.2	51.5
Fuel consumption @ 100% load (lit/hr) ^	54.1	67.4
Lube Oil Specification	15W40 Ci4+	
Lube Oil Refill Quantity (lit)	30	
Lube Oil Consumption @ Full Load \$	0.1% of Fuel Consumption	
Lube Oil Change Period (hrs.)	500	
Radiator Coolant Refill Quantity (lit)	31	45
Alternator Specification		
Make**	CG/Stamford	CG/LS/Stamford
Enclosure Type	IP23	IP23
Voltage regulation	±1%	±1%
Class of insulation	H	H
Maximum Unbalanced Load across Phases	25%	25%

Notes: Above specifications are subject to change without prior notice due to continuous product improvements. All engines & alternators conform to respective IS standards All the genset specifications conform to ISO 8528 standard, Fuel - High Speed Diesel (HSD IS 1460 : 2005)

^ Considering 0.845 specific gravity of diesel, 5% tolerance, \$ Considering 0.89 specific gravity of oil, For Standby duty, contact Powerol authorized representative All specifications are at standard NTP operating conditions.

A tolerance of +/- 5% will be applicable on declared power values.

**Alternator configuration available.



Mahindra & Mahindra Ltd.
Mahindra Powerol
MHEL, 1st Floor, Gate No. 12, A-1/1,
Talawade Chakan Rd, Chakan Industrial Area,
Phase-IV, Nigoje, Maharashtra, 410501.

Dealer /OEM address



Toll free no.
1800 419 1999



poweroldg@mahindra.com



mahindrapowerol.com